

Contact Information

For technical support, contact your distributor or supplier firstly.

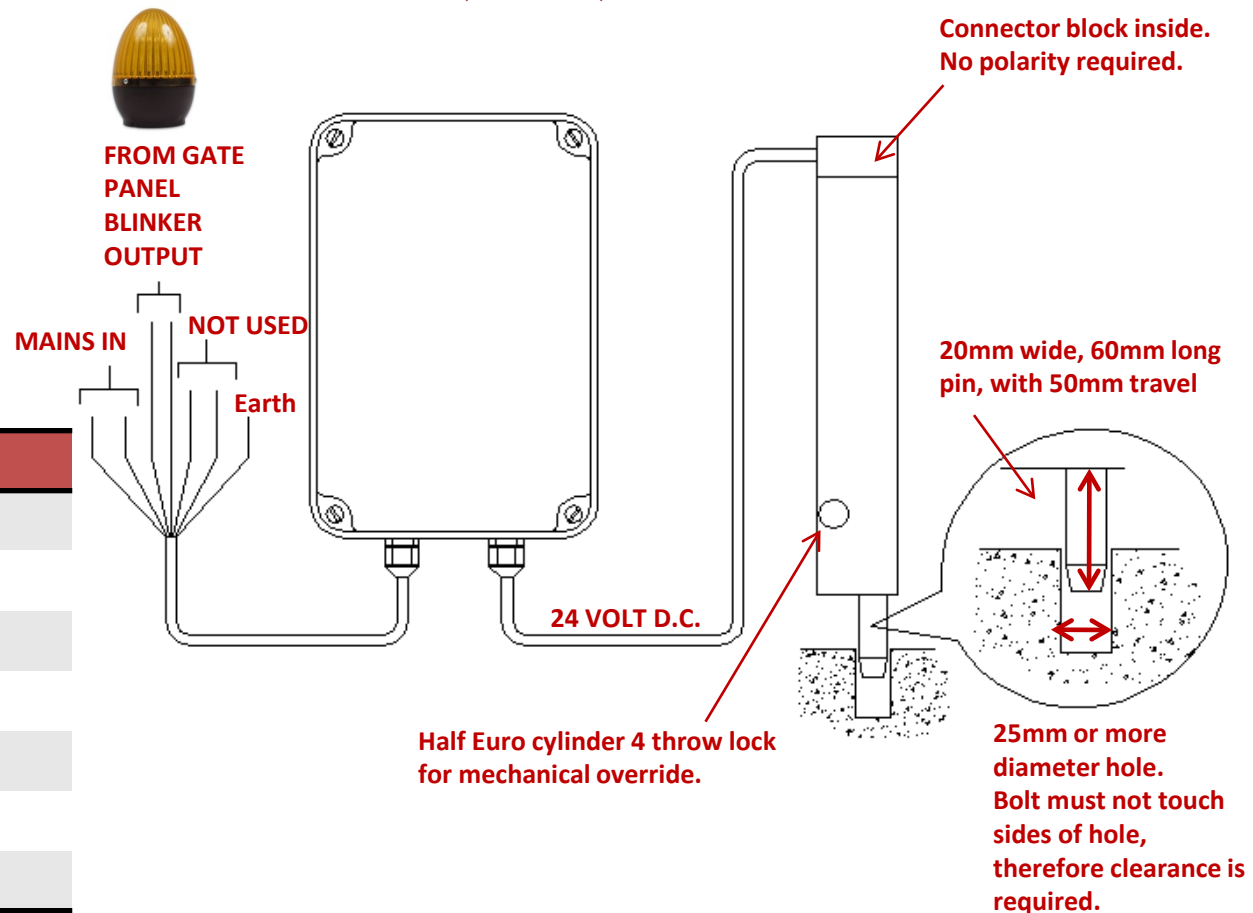
Manufactured by;
Advanced Electronic Solutions
 Unit 4C, Kilcronagh Business Park,
 Cookstown, Co Tyrone,
 United Kingdom,
 BT80 9HJ

Web: www.aesglobalonline.com

Tel UK Head Office:
 +44(0)288 639 0 693

- 1) This electric lock is powered from a 24v d.c. Power source. It is required to be energised for the duration of the opening and closing phase of the gate stroke.
- 2) Several versions of this control unit are available, depending upon the voltage output of the blinker on the gate panel being used. Please check the gate control panel you are using is compatible with this lock controller. Most blinkers operate on a 230V bulb. Possible versions are..

12v d.c.	24v d.c.	230v a.c.
12v a.c.	24v a.c.	



Wire	Description
1	Live 230 volts in
2	Neutral
3	Blinker out L
4	Blinker out N
5	N/A
6	N/A
7	Mains Earth